

Boardwalk

Cooperage Lane

SOUTHVILLE

APPROXIMATE FLOOR AREA
55.1 SQM / 593 SQFT

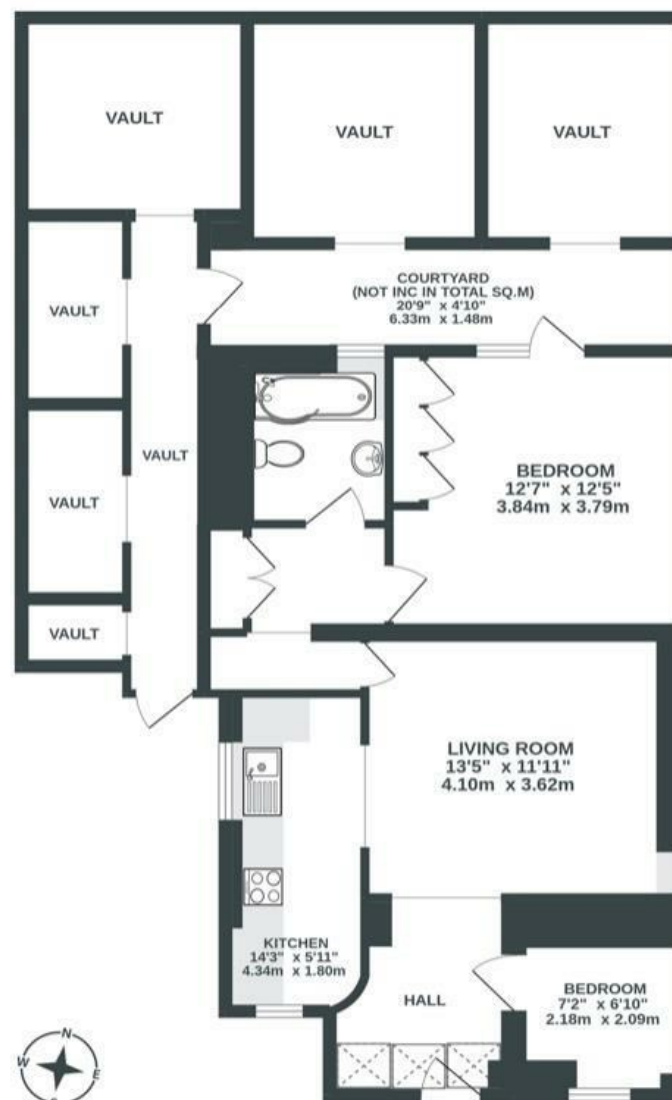
BOOK A VIEWING

01174 532 985

hello@boardwalkpropertyco.com



GROUND FLOOR
593 sq.ft. (55.1 sq.m.) approx.



VAULTS NOT INCLUDED IN TOTAL SQ.M/SQ.FT

Illustrations are for reference purposes only, measurements are approximate, not to scale.

Boardwalk

Cooperage Lane , BRISTOL



£350,000



2 Bedrooms



Bristol, BS3



1 Bathrooms

1PI

'Cooperage Lane in the heart of Southville has proved to have it all. Tucked away behind Coronation road lies our flat, with the rarities of a secluded south facing courtyard and room for two cars. This spacious property, with its light and airy entryway and outdoor space to the front and rear, has provided an ideal home for us, as well as Buddy the dog.'

Cooperage Lane is central to the eclectic mix Bristol offers, the local and independent business on North Street a five-minute walk away, as well as the local park and Baltic Wharf. It's a pleasant stroll to Clifton Village and just 10 minutes to Wapping Wharf and Harbourside with City Centre beyond. This allows easy access to all bars, restaurants, shops, and public transport including Temple Meads train station. With its prime location, parking and outdoor space Cooperage Lane has been perfect for enjoying all Bristol has to offer.'

